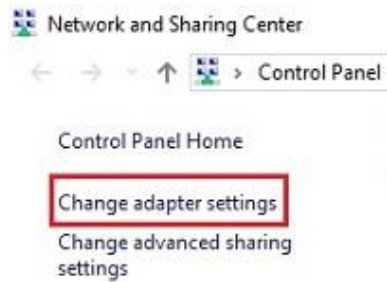


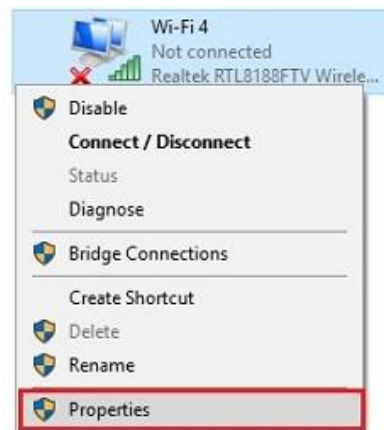
Process to connect with router in WIN10



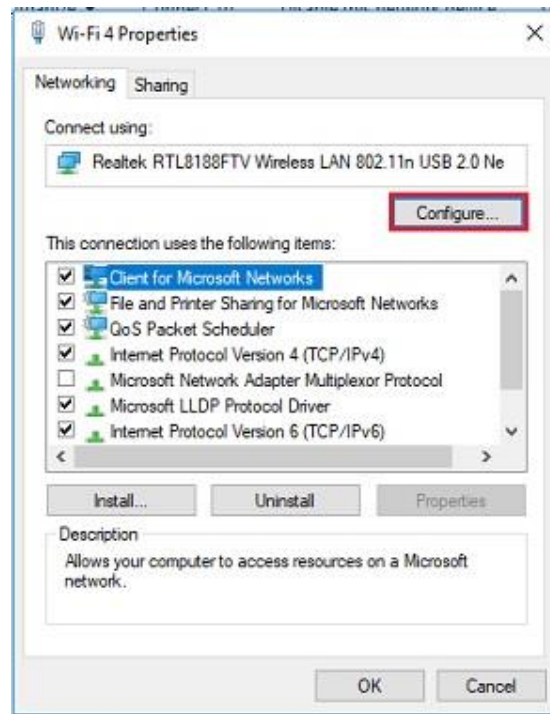
1. Right click on network icon and click on properties.



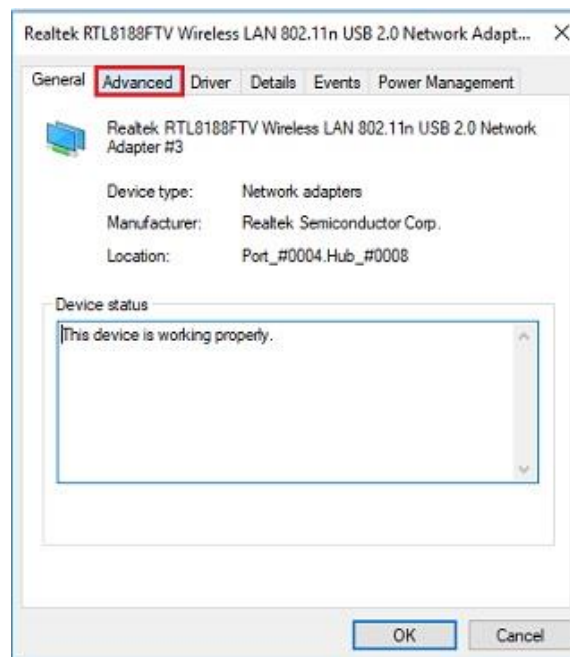
2. Click on change adapter setting.



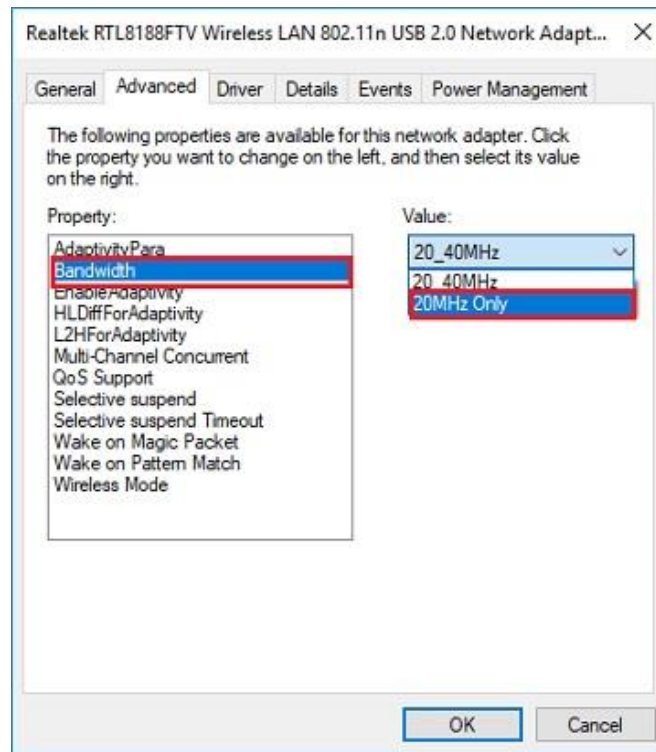
3. Right click on WiFi network icon and click on properties.



4. In WiFi properties windows click on configure.

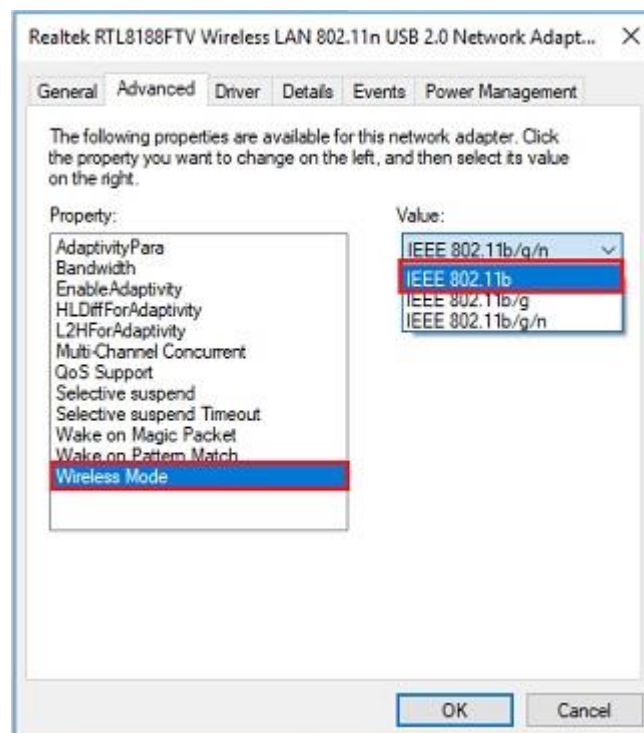


5. In configure windows click on Advance tab



6. i) In Advance menu select Bandwidth and change the Value 20_40MHz to 20MHz Only and click on OK.

OR



ii) In Advance menu select Wireless Mode and change the Value 802.11b/g/n to 802.11b and click on OK.